

Nonprofit Organization  
U.S. Postage Paid  
Grantville, KS 66429  
Permit No. 2

GRANTVILLE UNITED METHODIST CHURCH  
PO BOX 164  
GRANTVILLE KS 66429

ADDRESS SERVICE REQUESTED

## Calendar of Events

Nov. 02 Worship Committee Mtg. @ 2:00 p.m.  
Nov. 03 UMW Meeting @ 1:00 p.m.  
Nov. 07 End Daylight Savings Time  
Nov. 11 Veterans Day  
Nov. 17 Finance Committee Mtg. @ 6:00 p.m.  
Nov. 17 ADCO Committee Mtg. @ 6:30 p.m.  
Nov. 19 Deadline for Village Bell  
Nov. 21 Youth Group Mtg. - After 2nd Service  
Nov. 25 Thanksgiving Day

*NOTE: All regularly scheduled meetings and events are temporarily cancelled due to continued concerns regarding the Covid-19 pandemic. A limited number of necessary meetings will continue on an at need basis. Masks and social distancing will continue to be practiced.*



# Village Bell

Sunday School — 9:40 a.m.

Worship Services — 8:20 a.m. and 10:45 a.m.

November 2021

Vol. 52 No. 11



Inside:

Pastor's Note: pg. 2  
Community Corner: pg. 3, 4, 5, 6, 7  
Birthdays & Anniversaries: pg. 9  
Calendar of Events: pg. 10, 11, 20  
Greetings from the Andersons: pg. 13  
Meeting Minutes: 15  
Greeters & Ushers: pg. 18  
Thank You Notes: pg. 18  
Thoughts & Prayers: pg. 19

## *A Note From The Pastor ~ November 2021*

In this month of Thanksgiving, we are often torn between being thankful and being greedy. I remember the years before the holiday season *BLACK FRIDAY* sales. The month of November was filled with the preparations for the holiday meal, the parades, family gatherings, cool weather, and frost on the grass. We actually took the time to be thankful for the blessings our LORD has given to us. I recall driving to my grandparents in Chidester, Arkansas where my mother's four sisters, two brothers, aunts & uncles, and families would gather. When the meal was ready, my grandfather, Ellis Beaver, would offer a prayer of thanks for God's blessings. After everyone was stuffed, kids went outside to play at the farm as the adults retired to the living room to watch the Dallas Cowboys play the Washington Redskins. It was a grand time to be thankful.

What are you truly thankful for? Is it the new 85-inch TV that is on sale for less than \$1,000 on Black Friday; or is it that you have lived another year and can enjoy your family as you break bread together? Are you thankful for waking up each day with a joyful and grateful heart for all that God has given? Start each day with a big:

*thank you!*

Some other items to share. I want you to notice that starting with this month's calendar, we are dropping all non-occurring activities from the calendar. If it is on the calendar it is scheduled to happen. I want to encourage our various ministries, missions, groups and activities to restart as quickly as possible. As long as we meet under the guidelines of the ADCO (masks, social distancing, and sanitization) all groups should be able to return to their ministry. Then contact Annette to get it on the calendar and in our bulletin. Let's get back to actively seeking out the ways to reach God's people. We have restarted our Coffee Time Fellowship. There is now coffee and snacks available beginning before the 8:20 service and continuing until after the 10:45 service. We will also begin again our Hug Bears, although a little differently. Instead of everyone hugging the bear, we will pray over it during our service then send it to its recipient. We will now call these bears our Pray Bears.

When January 2022 arrives, I plan to restart the Quest Bible Study. I have yet to decide on what day, so stay tuned for the details. What other activities, ministries, or missions can we restart or begin in this new year that will help our corner of Kansa get excited for Jesus' discipleship?

*Rick*

### **Those Who Are Ill Or Recovering:**

Chuck Gantz  
Mike & Mark Turpin  
Pam Mongold  
Marilyn McPherson  
Aletta Spreer  
Jan Kendall  
Bernard Neubauer  
Kathy Brown  
Dave Jones

### **Special Friends:**

Crosby Nail  
Dick Lux  
Fleda Umscheid

### **Those With Cancer:**

Ron Kendall  
Bobbie Clough  
Gary Lin Day Jr.  
Darrell Jackson  
Dorothy Gantz  
Ellen McPherson  
Matt Erickson  
Ted Decker  
Elaine Frisbie  
Naomi Castleberry

### **Dearly Departed:**

Al Johnson  
Rod Brown  
Mary Ashby  
Jack Rees  
Bill Buxton  
Jerry Brown  
Millie Sanborn  
Charles Crawford  
Michael Bright  
Jo Lindley  
Tom Grindol  
Russ Winsor  
Steve Kendall  
Frances Kirkham  
Sally Shirley

### **Membership Committee**

#### **Average Attendance for October:**

**67 - in person  
38 - online**



***Thank You For Visiting  
Us In Worship.***

***Please Come Again!***

***Pastor Rick Souter***

*Welcome*

**8:20 A.M. Services**  
**Greeters & Ushers**

**November 7**  
*Bernard Neubauer*

**November 14**  
*Caroline Bigham*

**November 21**  
*Janet White*

**November 28**  
*Ruth Blodgett*

**10:45 A.M. Services**  
**Greeters & Ushers**

**November 7**  
*Neil & Nancy Gantz*

**November 14**  
*Mark & Donna Fields & Family*

**November 21**  
*Jerry & LaVonne Wilson*

**November 28**  
*Charles & Helen Worthington*



Many, many thanks for a wonderful 92nd Birthday Party which will be a special memory to treasure always. Thanks to everyone that sent beautiful birthday cards, made telephone calls and family and friends who attended the party. My love to all.

Jeanne Gantz

\*\*\*\*\*  
The XYZ Potluck has been cancelled until further notice due to Covid-19 concerns.  
\*\*\*\*\*

Please Join Us for All Saints Day, November 7, 2021 (both services). This is an opportunity to remember those who have passed before us. We will celebrate this day with a candle lighting ceremony. Everyone is welcome to light a candle in remembrance of your loved ones.

\*\*\*\*\*  
Hope this finds the community doing well and ready for the fall and upcoming holidays. Thanks for all that you do!

My best wishes to everyone,  
Tam Engler

**Community Corner**



**Jerry White Family Care Clinic**  
**Primary Care Clinic for the Uninsured**

The Jerry White Family Care Clinic is a primary care clinic for the uninsured residents of Jefferson County.

**Where:** Jefferson County Health Department  
1212 Walnut  
Oskaloosa, KS 66066  
785-403-0025

**Nurse Practitioner:** Renie Stephan, APRN  
**When:** **Monday, November 29, 2021 (Last Monday of each month)**

**Clinic Hours:** **Appointments start at 1:00 p.m.**  
**Call 785-403-0025 for an appointment.**  
**Walk-ins are welcome and will be seen as time allows.**  
**Walk-ins must check in prior to 2:30 p.m.**

**Requirements:** **Must** reside in Jefferson County and show proof of residency.  
**Must** be uninsured.

**Cost Based on a Sliding Fee Schedule**  
Based on the annual Federal Poverty Income Guidelines  
Income and Discount Eligibility Tables (4 levels)

NO ONE IS REFUSED SERVICES DUE TO INABILITY TO PAY	
<=100% of Federal Poverty Level	Donations
101-150% of Federal Poverty Level	\$ 5.00 per visit
151-200% of Federal Poverty Level	\$10.00 per visit
>200% of Federal Poverty Level	\$15.00 per visit

**No One Refused Services Due To Inability To Pay**

**Call the Jefferson County Service Organization at 785-863-2637 for transportation**



## Community Corner



### BLESSING BOXES



The Blessing Boxes are located on the southeast corner of GUMC's property. These boxes are stocked with a variety of canned goods, ramen noodles, macaroni & cheese, hamburger helper, pasta salad, pancake mixes and pancake syrup, and condiments such as ketchup, mustard and relish. Along with food products, laundry detergent and fabric softener are also usually available, as well as dog food and treats, and books for young children.

These items are free for anyone in need or just needing an item in a pinch. Example: your making a cake and discover your out of vanilla. Simply check the blessing boxes and take the item or items you need. If you are able to you can replace the item the next time you visit your supermarket, and if not that's fine as well. Anyone in need is free to take anything that is placed in the Blessing Boxes, no questions asked.

One of the boxes will be stocked with seasonal items such as: stocking caps and gloves during winter months, school supplies such as pencils and pens, tablets, erasers and rulers during July and August, and cleaning supplies and personal hygiene items such as shampoo, toothpaste and deodorant. Donated items must be able to tolerate heat and cold and be non-perishable. Be sure to check expiration dates to ensure items have not expired. Your donations are truly appreciated.

Please utilize these boxes and don't feel embarrassed or ashamed. GUMC only monitors these boxes to stock them, check for expired items and to be sure items are dry and clean. When stocking the blessing boxes please place items in plastic to keep them dry and insect free. Our goal is to ensure that no one is going without for any reason.

## Support transfer to Ripe for Harvest

For those of you who would like to continue to journey with us to develop, preserve, and restore global workers, Ripe for Harvest has three ways you can join the team financially:

Please visit our Ripe For Harvest webpage and click the "Donate Now" button:  
<https://www.ripeforharvest.org/about-jim-and-dawn-anderson/>

Available options:

1. Electronic Funds Transfer
2. Credit/Debit/Electronic Check
3. Check : Mail your check, including a note specifying Jim and Dawn Anderson or the account number (#20431) to:

**Ripe for Harvest World Outreach**  
**P.O. Box 487**  
**Monument, CO 80132**

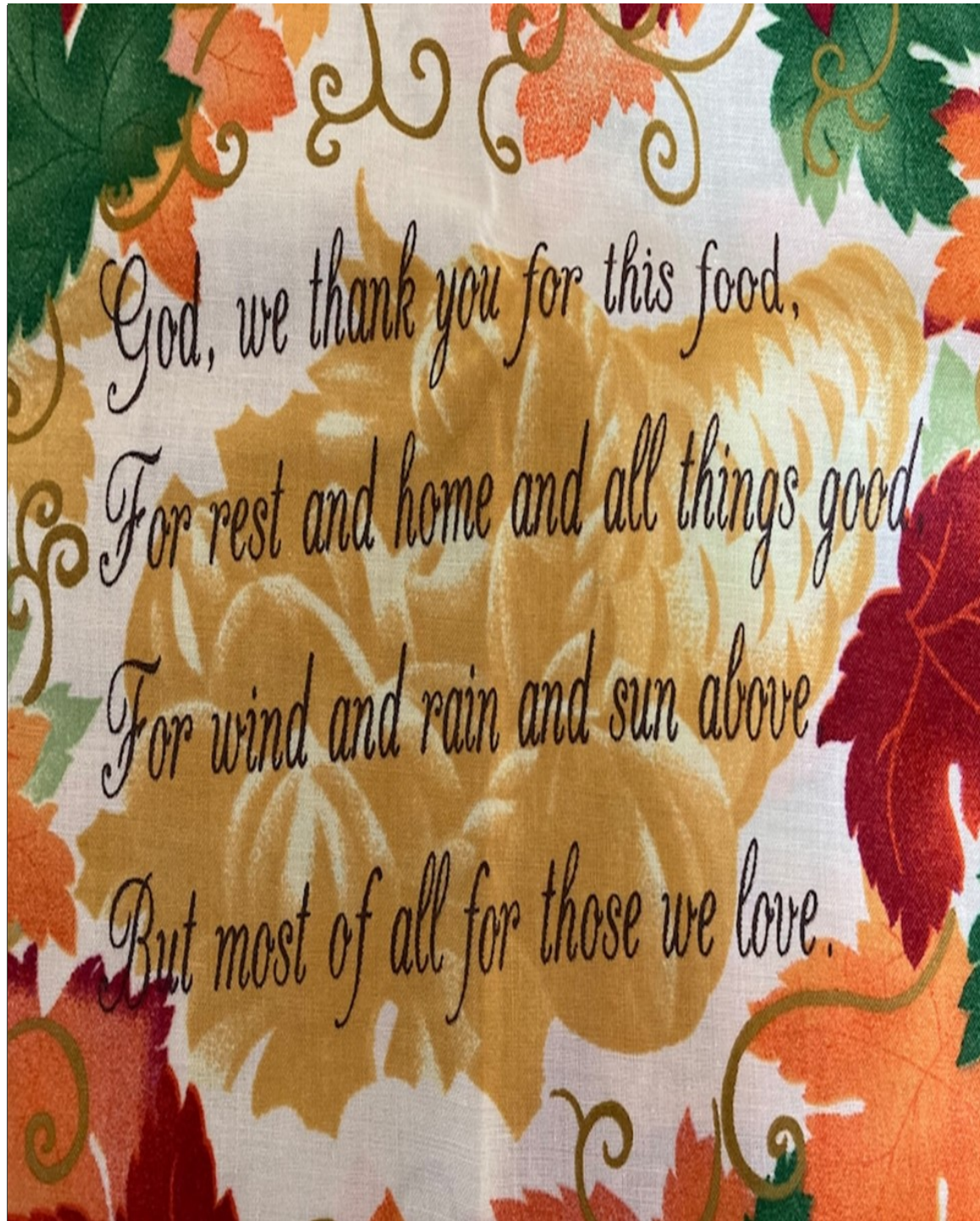
If you intend to give a year-end gift, as many of you do, would you consider giving it via Ripe for Harvest? That would assure that it would be available for us when we make the final switch next month- as those funds will not transfer with us to the new ministry.

One last thing - if you do sign up to start or continue support via RFH, would you write and let us know? We are working to figure out the financial system with the new organization and don't want anything to fall through the cracks! Thanks!

We welcome any questions you might have about member care and this new direction God is moving us in! Please email us at [jdander5@wpartners.org](mailto:jdander5@wpartners.org).  
**To email Dawn and Jim please reply to: [jdander5@wpartners.org](mailto:jdander5@wpartners.org)**

Request to join our Facebook group!  
Anderson's Adventure in Africa

**RIPE** *for Harvest*  
WORLD OUTREACH



## Community Corner

### **New Grief Support Group**

Location: Grantville United Methodist Church  
Dates: November 2nd, 16th & 30th @ 6:00 p.m.  
November 9th & 23rd @ 2:00 p.m.

Come and join us in our efforts to comfort and encourage others in our times of loss and sorrow.

Together we will open our hearts and let God use us to encourage, comfort, and support our Church and community. Remember grief and loss may come with any major change in our life.

Our world suffers many forms of loss:

Divorce, loss of job, broken friendships, health, our eyesight, our hearing, loss of a pet, the empty feeling when a child or children have grown and the house feels empty, being caretaker of a spouse and watching them struggle. All of these things and many more may begin a cycle of grief. Our hearts are not limited to death of a loved one or friend.

We welcome anyone that feels a need for encouragement from others that have walked a journey of loss.

We will offer a safe place filled with love and encouragement. Feel free to come and just listen. Sharing with others is all voluntary and you are welcome to attend according to your need.

Please read these two scriptures and hear God speak to your heart about how we are called as the body of Christ to comfort others.

Matthew 5:4  
2 Corinthians 1:3-5



## Community Corner



**DOORSTEP**  
Neighbors Helping Neighbors

### **DOORSTEP NEWS**

*Doorstep is beginning it's plans for the 2021 Christmas Store. They plan to adopt 260 households with more than 800 individuals from the Christmas Bureau. How distribution will be handled is currently being discussed.*

*The first quarter of Doorstep's 55th Anniversary has passed, with donations from their Anniversary Fund already reaching over \$31,000.00. Donations are earmarked for Doorstep's HVAC system. Doorstep greatly appreciates the generosity already given and hopes to receive an additional \$129,000.00. The current HVAC system is over 60 years old. Any amount over the \$129,000.00 will go toward helping our community neighbors in need with basic's such as rent and utility assistance. Doorstep is asking its supporters to donate a minimum of \$55.00 per person towards its 55th Anniversary Fund. Please mail your donations to Doorstep or donations may also be made through PayPal on Doorstep's website at: [www.DoorstepTopeka.org](http://www.DoorstepTopeka.org) under the Donate tab. Please indicate your contributions are for the Anniversary Fund. Your generosity is truly appreciated.*



**MEETING - NOVEMBER 3, 2021  
1:00 P.M. @ GUMC**

**PLEASE BRING YOUR  
THANK OFFERING  
BOXES TO THE MEETING!**

**WE LOOK FORWARD TO  
SEEING YOU THERE!**

**THANK OFFERINGS ARE DUE NO LATER  
THAN NOVEMBER 15, 2021**

*thank you!*

***PLEASE JOIN US***

## ***DRIVE BY LIVE NATIVITY***

***DATE: SATURDAY, DECEMBER 11, 2021***

***WHERE: GUMC***

***3724 SOUTH ST.***

***GRANTVILLE, KANSAS 66429***

***TIME: 5:30 P.M. - 7:00 P.M***



***Sponsored By The Grantville United Methodist Church Youth Group***

## **Community Corner**



### ***CAN YOU HELP GLOBAL MINISTRIES OF TOPEKA SEND AID TO THE PEOPLE OF HAITI?***

The country of Haiti is extremely poor. 80% are unemployed; employment is not available to make a living. Haiti has a population of 10 million, and the size of Haiti is similar to the state of Delaware. Two thirds of the population is under the age of 16 years old; many orphanages have been established to help support the children. Two thirds of the country's terrain is mountainous. The people try to grow their own food, when seeds and tools are available; and if young crops can survive the ravages of the weather and the steep terrain.

Global Ministries has established and supports 20 different sewing and trade schools that offer classes to teach Haitians to make clothing for the orphans and the people. Their two-year goal is to teach people, the skills of making items that will support their families after they graduate from the trade program. The young/adults are eager to learn and accept the message of Jesus that is shared. Other classes are offered if teachers are able to teach the skills and materials are available. Also, 103 churches have been restored/established.

#### **Suggested Items for Haiti:**

Sewing items: electric/treadle sewing machines, thread, buttons, patterns, all kinds of material, quilting material, and sewing accessories.

Clothing and shoes: Infant, children, teen, and adult summer and light weight winter type clothing and shoes. Feeding accessories and bedding for infants. Toys and games for children. Backpack and school material for youth. Men's suits, ties, and shoes for Pastors. Bicycles (workable or needing fixing) for transportation for pastors

Kitchen/cooking items: large and small pans to cook over fire. Small barbeque grills. Plastic containers with lids for food storage. Large cooking spoons, forks, utensils to stir and serve. Light weight dishes, tableware, drinking glasses, towels.

Cleaning items: towels, wash cloths, wash boards, tubs, pails, soap

Housing: lumber, nails, small ladders, hand tools, tents

Bedding: light blankets, sheets, pillows, mattresses

Medical/hygiene: pain relief, bandages, shampoo, soap, empty pill bottles, tooth brush/paste (sample size your dentist gives on visits)

Garden: hand tools, seeds (vegetable and flowers), hoes, rakes, wheel barrow

Rev. Max Manning, 92 years young, is the founder of Global Ministries which is located in Topeka on 6<sup>th</sup> Street, between Topeka Ave. and Kansas Ave. (Office 785-232-2992 or Cell 785-231-8183), PO Box 161, Topeka, 66601. maxmanning@outlook.com. Global Ministries ships a cargo, loaded with needed items and rice, to Haiti about every 2 months.

501C3 is available upon request.

Another contact person: Janice Larrison, cell 785-806-5792. Email [janlarrison@cox.net](mailto:janlarrison@cox.net).

## Donations Needed For God's Storehouse

To have food available for God's Storehouse in the year 2021, we plan to again double the contributions each month. Families, whose last names begin with **R, S, T & V**, are asked to bring canned foods, paper goods, boxed pastas and pasta sauces during the month of **November**.

Other suggested items for donation are: powdered milk, saltine crackers, cereals, spam, tuna and canned vegetables. There is always a need for baby diapers, baby wipes, cleaning products, washing soap, softener, deodorant, toothpaste, toothbrushes, bars of soap and shampoo.

**Please watch expiration dates on all products. We cannot donate expired products. Thank you!**

*Generosity*  
changes everything

## Sunday Schedule

**Informal Worship**  
8:20 a.m.

**Sunday School**  
9:40 a.m.

**Traditional Worship**  
10:45 a.m.

**Church Phone**  
785-246-3621

**Email us at:**  
grantvillechurch@  
grantvilleumc.com

**Church Office Hours**  
9:00 a.m. - 4:00 p.m.  
Tuesday and Wednesday,  
& 9:00 a.m. - 1:00 p.m.  
Thursday

**Website**  
<http://grantvilleksumc.org>  
Click on Live Church  
Service

**Village Bell Publisher**  
Annette Rodecap

**Village Bell Editor**  
Jeanne Gantz

**Pastor**  
Rick Souter  
246-6068 (home)  
785-969-0061 (cell)

## Greetings From the Andersons November Update

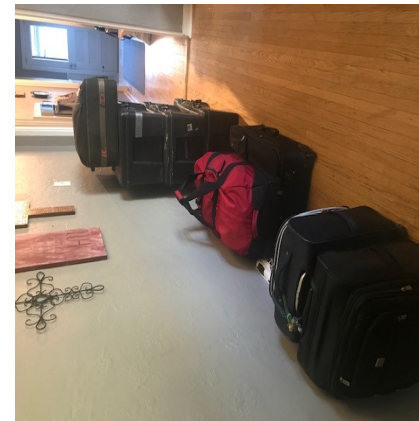
Jim and Dawn Anderson <theandersonadventures@gmail.com>

We just wanted to quickly update you to let you know that we made it safely to the conference with all of our luggage - filled with all of the goodies YOU provided! We did get some funny looks by our fellow travelers and the hotel staff when they saw all of OUR luggage compared to the others coming for the two week conference with just a suitcase and carry on. I tried to explain to everyone who would listen that the luggage was actually for the second part of our journey. 😊. I hope they believed me!

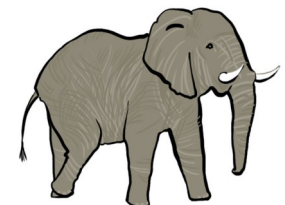
We started this afternoon and the time has already been so rich. We are so very grateful to all of you for this opportunity to learn more about this work of the stewardship of one of the Kingdom's greatest assets - the hearts of the global workers!

We covet your prayers for continued learning and networking.

Blessings,  
Jim and Dawn

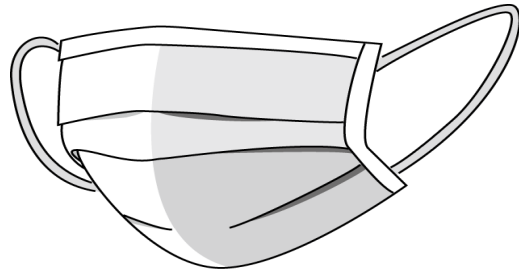


Request to join our Facebook page  
Out of Africa - Into the World





## MASKS REQUIRED AT GUMC



*Effective July 15, 2020, the GUMC Administrative Council requires the use of masks for all church ministry activities inside our facility. For your convenience masks are provided at church entry points. We truly appreciate your cooperation! The sanctuary is open and all are welcome to attend as you feel comfortable.*

## SCHEDULING UPDATES

*Due to continued concerns regarding the Covid-19 pandemic, all regularly scheduled events and meetings have been cancelled. The Village Bell Calendar has been modified and these regularly scheduled events removed until it is safe for them to resume. However, the following meetings and/or events are considered necessary and will be held. Committee Members will wear masks and practice social distancing during these necessary meetings and gatherings:*

*Worship Committee Meeting - November 2, 2021 @ 2:00 p.m.  
 UMW Meeting - November 3, 2021 @ 1:00 p.m.  
 Finance Committee Meeting - November 17, 2021 @ 6:00 p.m.  
 ADCO Committee Meeting - November 17, 2021 @ 6:30 p.m.  
 Youth Group Meeting - November 21, 2021 - After 2nd Service  
 Youth Group Live Nativity - Saturday, December 11, 2021*



## November Birthdays

01 Alissa Stark  
 01 Dixie Thompson  
 01 Courtney Garrett  
 01 Marla Worthington  
 03 Nikki McPherson  
 03 Emily Leslie  
 03 Easton Pownas  
 04 Debbie Bouton  
 04 Ben Winsor  
 04 Mike Zumbrum  
 04 Daniel Hemme  
 05 Joyce Hemme  
 05 Kaydence Stark  
 05 Christian Brown  
 06 Lane Bigham  
 06 Leon Sylvester  
 07 Nick Mongold  
 07 Calvin McPherson  
 08 Sarah Hemme  
 09 Trish Reuter  
 13 Neil Gantz  
 13 Lewis Williams  
 13 Thad Metcalfe  
 14 Nancy Turpin  
 14 Ryan Akagi  
 15 Donna Fields  
 16 Nancy Gantz  
 16 Janice Kendall  
 16 Tom Shirley  
 17 Alex Hemme  
 18 John Metcalfe  
 22 Katelyn Turpin  
 23 Lucas Bigham  
 23 Mikaela Daniels  
 24 Lacy Perry  
 24 Nathan Taylor  
 24 Marledeen Joy  
 25 Gregory Painter  
 25 Brooke Metcalfe  
 25 Lilianna Ortiz  
 26 Rachelle Turpin  
 26 John Ashby  
 26 Sonya Essman  
 29 Randy Bigham  
 30 Linda Montour



## November Anniversaries

22 Harlan & Vanita Hunt  
 26 Francis Koder & Barbara Ball  
 28 Mike & Janet Cool



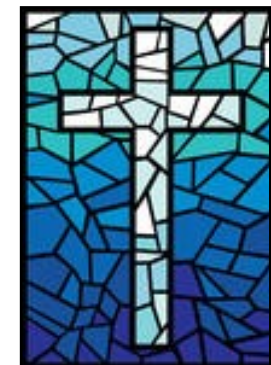
© wondercliparts.com

## Special Prayers For:

Service Men and Women  
 Farmers and Farm Families  
 Our Church's Mission and Ministry

## Our Christian Education

Sunday School  
 UM Women  
 UM Men  
 UM Teens



# Calendar of Events November 2021

Sun	Mon	Tues	Wed	Thurs	Fri	Sat
	1	2 Worship Committee Mtg. 2:00 p.m.	3 UMW Meeting 1:00 p.m.	4	5	6
7 	8	9 Evangelism Committee Mtg. @ 10:00 a.m.	10	11 	12	13
14	15	16	17 Finance Meeting 6:00 p.m. ADCO Meeting 6:30 p.m.	18	19 Deadline for Village Bell	20
21 Youth Group Meeting After 2nd Service	22	23	24	25 	26	27
28	29	30				